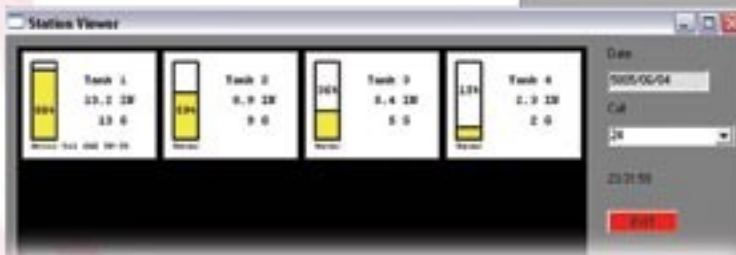
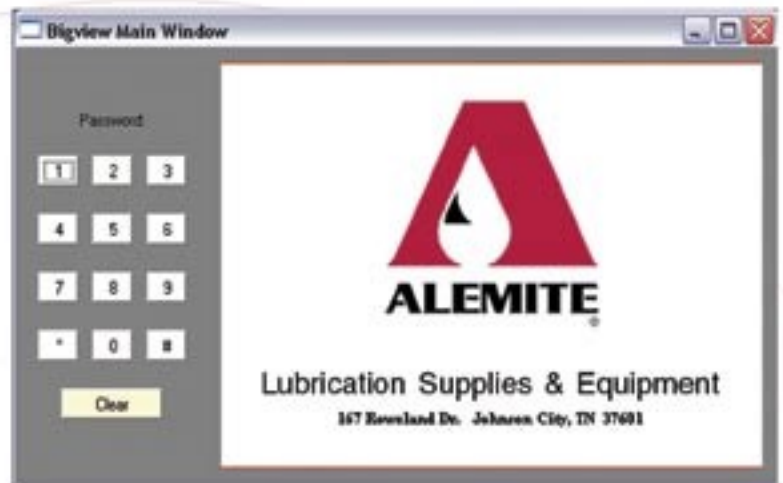




Bigview Tank Monitor

Alemite's new Bigview Tank Monitor provides safe and accurate fluid level monitoring for multiple tanks. The system operates using a controller which connects to a series of probes. Each tank has one probe that relays information back to a computer via direct connect or a modem. Users can then view tank-level information, including warnings, directly or remotely.



Features

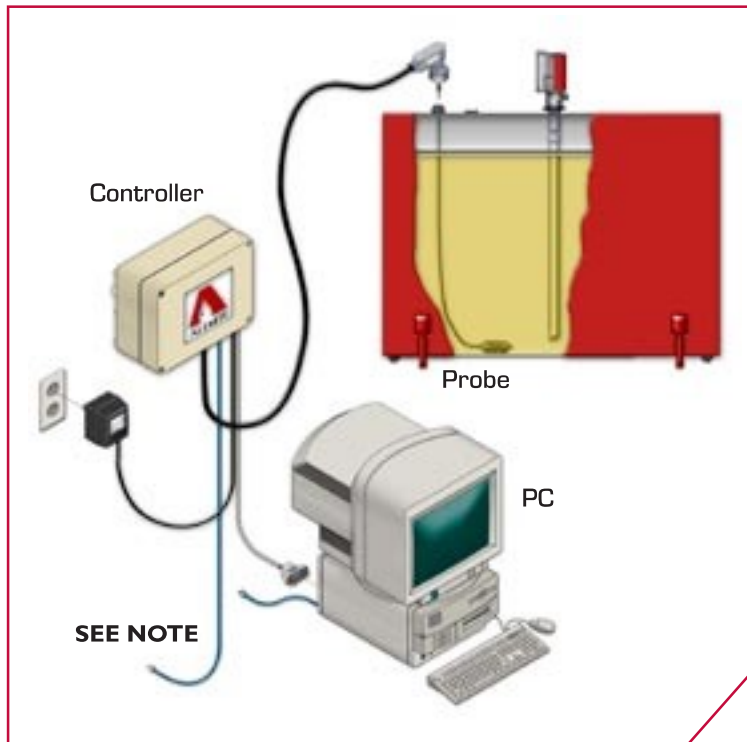
- Monitor up to 16 tanks per controller per station. Tanks may be monitored across multiple stations using additional controllers
- System is password-protected for security
- System sends warning to computer if tank levels are too high or too low
- Probes are compatible with non-flammable, petroleum-based fluids, synthetic oils, and antifreeze
- Logging feature allows the system to save all communication sequences to the hard drive
- User can view summary data for each tank

Benefits

- Eliminates need for on-site salesperson to check tank level
- Eliminates fluid outages and emergency deliveries
- Maximizes efficiency by allowing accurate delivery forecasting and scheduling
- Minimizes inventory costs through improved delivery scheduling
- Optimizes delivery truck loading to reduce fuel delivery costs
- Increases customer brand loyalty
- Displays accurate tank level information in real time

General Operation

1. Windows-based software (98, 2000, or XP Professional edition) is loaded onto a PC.
2. A probe is inserted into tank through existing bung opening and must rest flat on the bottom of tank to ensure accurate readings.
3. The system is configured with fluid type, tank size, and minimum and maximum fluid levels; information is then downloaded to the controller.
4. The probe senses pressure from the fluid above it and continuously relays that information to the controller.
5. The controller converts the pressure data from the probe to the height of the fluid remaining in the tank.
6. User enters call times for the computer to "contact" the controller through modem or direct connect.
7. The controller then sends the reading back to the computer where authorized users can view the volume of fluid in the tank.



Note: Depending on installation and configuration, system can relay information to customer PC or send information directly to oil provider via modem or both.

Technical Specifications

Model	Description
340074-A	Controller – 8 Channel*
340074-B	Controller – 16 Channel*
340075-5	Probe – 5 ft (1.5 m) Max. Tank Height
340075-15	Probe – 15 ft (4.6 m) Max. Tank Height
340075-25	Probe – 25 ft (7.6 m) Max. Tank Height

* Includes 9V dc transformer, RS232 Serial Cable, and CD-ROM

Transformer	
Input	120V ac, 60 Hz 11 Watt
Output	9 V dc 500 mA
Cable Length	6 ft (1.83 m)
RS232 Serial Cable	
Connections	Modular Plug, DB 9-Pin
Length	12 ft (3.66 m)
Probe Accuracy	
Part 340075-5 Part 340075-15 Part 340075-25	1% of probe length



167 Rowland Drive
Johnson City, TN 37601
Toll Free U.S.: 866-4-Alemite
Toll Free Canada: 800-267-8022
International: 803-802-0001
Fax U.S.: 800-648-3917
Fax Canada: 800-267-2880
Fax International: 803-802-0192
www.alemite.com

LIT114 8/05



Markets / Applications

Oil Jobbers, Chemical Companies, Heavy Machinery Manufacturer, Municipalities, Pulp & Paper, Agriculture, Textiles